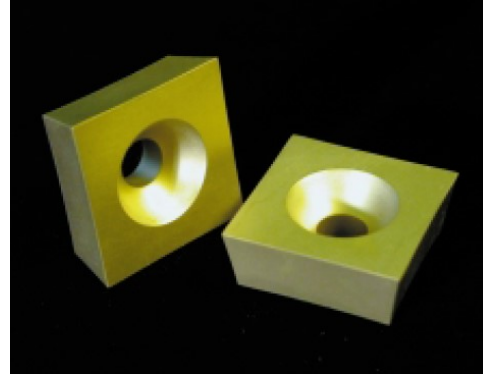
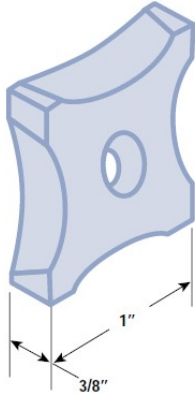


TiN Coated insert for Heavy Duty Scarfing Applications



AMT P/N	DESCRIPTION	TUBE DIAMETER	RADIUS inch
AMT-1201	SPUB-86B	UP TO 7/8"	0.475
AMT-1202	SPUB-86C	7/8" - 1 1/8"	0.590
AMT-1203	SPUB-86D	1 1/8" - 1 1/2"	0.785
AMT-1204	SPUB-86E	1 1/2" - 1 7/8"	0.985
AMT-1205	SPUB-86F	1 7/8" - 2 1/4"	1.180
AMT-1206	SPUB-86G	2 1/4" - 3 1/8"	1.575
AMT-1207	SPUB-86H	3 1/8" - 3 7/8"	1.970
AMT-1208	SPUB-86I	3 7/8" - 4 7/8"	2.470
AMT-1209	SPUB-86J	4 7/8" - 5 7/8"	2.970
AMT-1210	SPUB-86K	5 7/8" - 6 7/8"	3.470
AMT-1211	SPUB-86L	6 7/8" - 7 7/8"	3.970
AMT-1212	SPUB-86M	7 7/8" - UP	NONE

1" Square 4-Sided x 6" OAL HSS tool

AMT P/N	DESCRIPTION	TOOL RAKE 'X'
AMT-1341	SSLPL-16-90	ANY
AMT-1342	SSLPL-16-95	-5 degree
AMT-1343	SSLPL-16-100	-10 degree
AMT-1344	SSLPL-16-105	-15 degree
AMT-1345	SSLPL-16-110	-20 degree
AMT-1346	SSLPL-16-115	-25 degree

